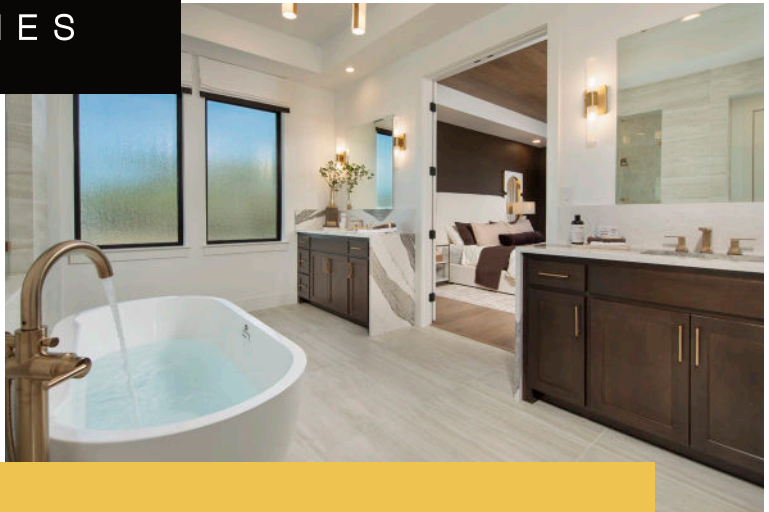
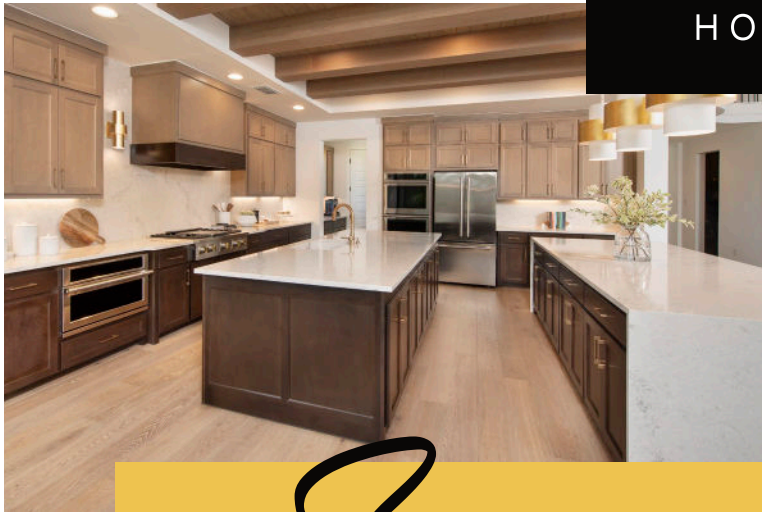




PERRY
HOMES



Summer **SALES
EVENT**

Up to \$35,000 for a Limited-Time*

Flex Cash* | **4.99% Interest Rate**
| **5.178% APR*** (30-Year Fixed Rate)

PARKSTONE
MORTGAGE



*Terms and restrictions apply. Offer subject to credit approval.
Must close by 09/30/26. Scan QR code for details and restrictions.
Equal Housing Opportunity. Equal Housing Lender. (184000)

